

What type of **internet**
does **your business**
really need?



Introduction

Whether you're running a small startup, growing a company, or managing a remote team, the right internet choice keeps you moving forward. This guide is your roadmap to understanding internet options, their benefits, and which one you need.

Types of business internet solutions

1. LTE

LTE is a plug-and-play wireless solution, offering fast and reliable connectivity without waiting for installation. It's perfect for businesses that need immediate internet access.

Best for:

Field service companies that require reliable connectivity in unpredictable or infrastructure-limited environments, such as utility technicians and relief units.

Features:

Speeds

Average 25 Mbps, with peaks up to 100 Mbps.

Setup

Quick installation — just insert a SIM, power and connect.

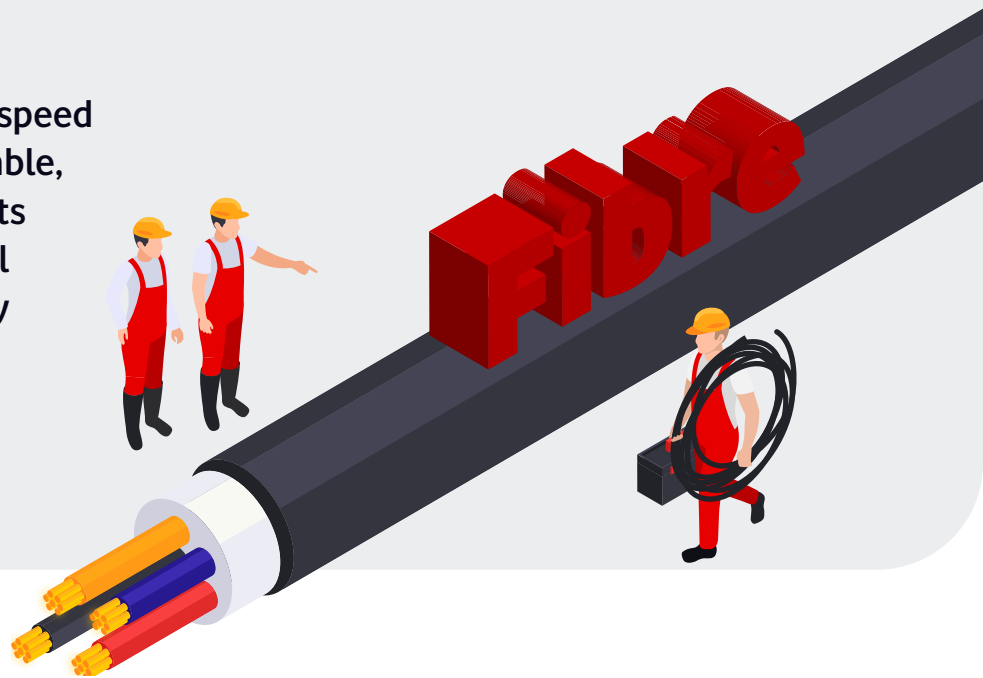
Flexibility

Portable solution for businesses on the move. (Given that a power supply is available for the router.)



2. Fibre internet

Fibre-optic is a stable and high-speed fixed-line connection. It's a reliable, long-term solution that supports a wide range of business-critical online activities. Its consistency and capacity make it suitable for businesses with sustained connectivity needs.



Features:

Speeds:

Up to 200 Mbps for high-performance connectivity.

Stability:

Immune to interference, ensuring uninterrupted service.

Data:

Uncapped, unthrottled and unshaped for seamless usage.

Best for:

Businesses that rely on secure, high-speed connections for cloud systems, remote collaboration, and large data transfers.



3. 5G internet

5G is the next wave of internet solutions—faster than older mobile networks. It delivers ultra-fast speeds and low latency, offering a powerful alternative to fibre.



Features:

Speeds:

Exceeding 1 Gbps for rapid data transfers and streaming.

Best for:

Companies using IoT, automation, and real-time data streaming in urban environments where fibre may not be readily available.

Latency:

Ultra-low response time, ideal for real-time applications.

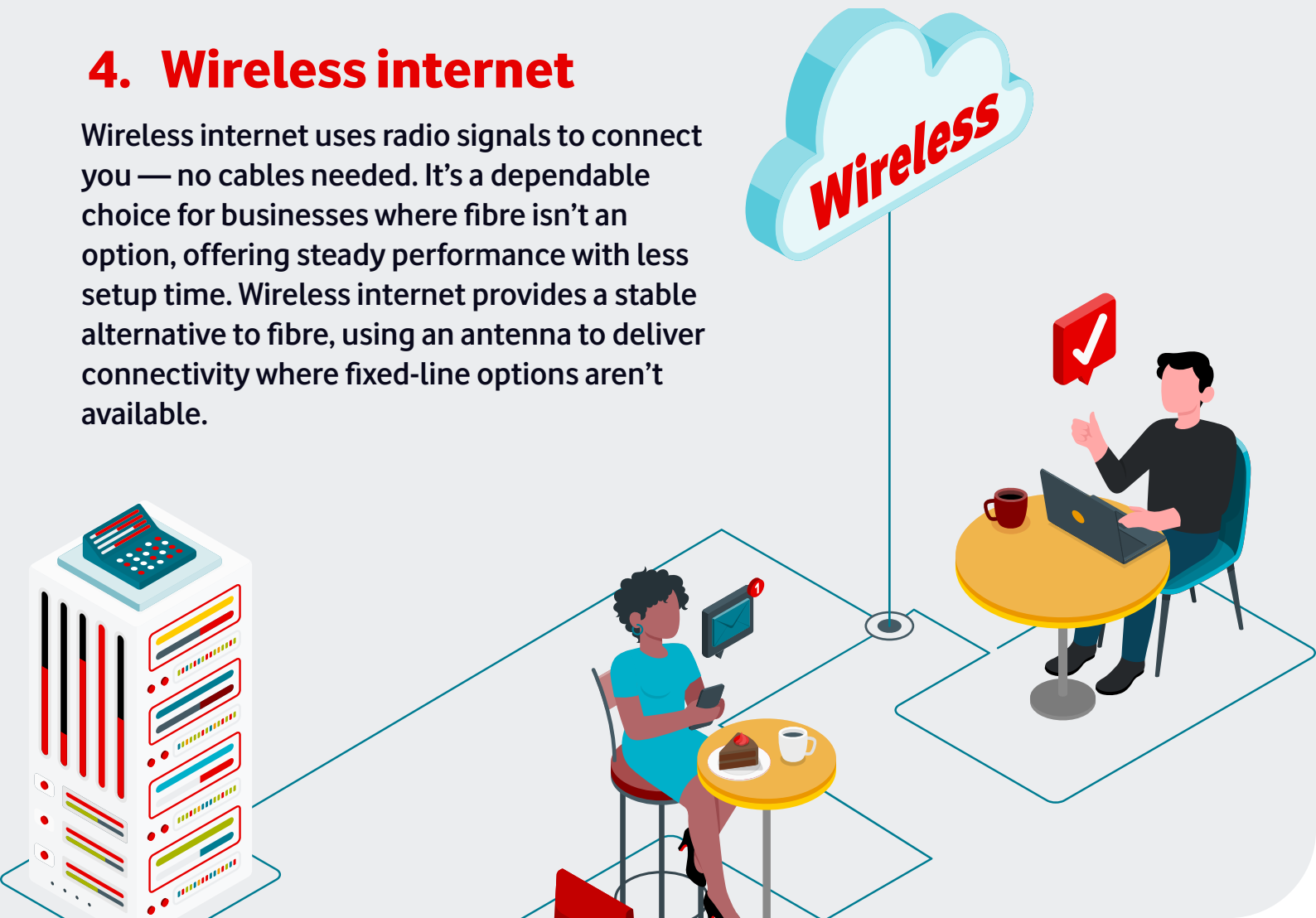
Setup:

Indoor and outdoor service available. Indoor service is fully installed by a technician for easy setup.



4. Wireless internet

Wireless internet uses radio signals to connect you — no cables needed. It's a dependable choice for businesses where fibre isn't an option, offering steady performance with less setup time. Wireless internet provides a stable alternative to fibre, using an antenna to deliver connectivity where fixed-line options aren't available.



Features:

Speeds:

Up to 80 Mbps for smooth business operations.

Symmetry:

Equal upload and download speeds for balanced performance.

Reliability:

Designed for stable connectivity in remote and urban areas.

Best for:

Businesses operating in rural or undeveloped areas without access to fibre, e.g. farms and construction sites. Requires an aerial to be installed on the roof of premises.

Choosing the right internet is like picking the perfect tool for the job. Whether you need speed, flexibility, or coverage in tough spots, Vodacom Business has the solution for you. Contact us today to find what fits your goals.



<https://www.vodacombusiness.co.za>

